

Canne Lodge Premium Room 3 (Level 12)

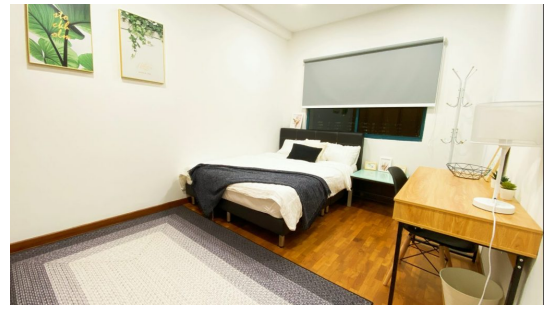
Canne Lodge, 75, Lorong 3 Geylang, Boon Keng,
Kallang, Central Region, Singapore, 388869,
Singapore

Phone :

Web :

Listing Summary

Published: Jan 16, 2016



Listing Description

Description Amenities & Features Floor Plan

Looking for a nice and cozy place to settle then check out Carine Lodge which is lovely as well as affordable. It is a freshhold apartment located at 75 Lorong 3 Geylang, Singapore 388669, in District 14. The modern medium rise apartment is completed in 2000 and close to Kallang MRT Station and Geylang Bahru MRT. Residents can get their daily necessities at the nearby Upper Boon Keng Market and Food Centre. Alternatively, they may head to the Kallang Leisure Park and the aforementioned Mustafa Centre for a host of amenities. Recreational facilities, such as the Kallang Water Sports Centre, are also just around the corner. Carine Lodge is located within this district which made it a desirable place to live in. The surroundings of Carine Lodge are filled with immense spaces of greenery that offers the residents with open parks, recreational hubs and nature reserves. The Apartment has facilities such as BBQ pits, gym, jacuzzi and swimming pool. The apartment is close to Upper Boon Keng Market and Food Centre and Sims Place Market and Food Centre. It is well connected and well linked with expressways and highways. Carine Lodge is an elite sphere of peaceful living in the heart of the city where the comfy quietude of nature beckons at doorstep, put side by side serenely contrast of the pleasure of city living.

Carine Lodge - Accessibility

As the Carine Lodge is located at District 14 which is the most prosperous and full of constructional developments, there are plenty of accessibilities available with this apartment. It is accessible through Kallang MRT Station which is closest to this property. There are other MRT such as Geylang Bahru MRT (DT24) and Aljunied (EW9). Bus services and other public transport are easily available near this apartment. This apartment is accessible via East Coast Parkway, North Bridge Road, and Lorong 1 Geylang.

Housemates

- Room 1
- Vacant
- Vacant
- Room 2
- Room 2
- Male - W
- IT



- This Room
- Vacant
- Vacant
- Meat Room
- Male/Female - JIM
- Banker/Accountant



- Balcony Room
- Male - I
- IT Consultant



Building Amenities

- Barbeque Area
- Sauna
- Garden
- Jacuzzi
- Supermarkets within 200m
- Jacuzzi
- Fitness Room
- Basement Carpark
- Tennis Court
- Swimming Pool
- Sky Deck

Unit Features

- Air Conditioning
- Dryer
- Cleaning (Common Areas)
- Microwave
- High Speed WiFi
- Light Cooking
- Oven
- Fridge
- Water Heater
- Washing Machine

Unit Features

Looking for a nice and cozy place to settle then check out Carine Lodge which is lovely as well as affordable. It is a freshhold apartment located at 75 Lorong 3 Geylang, Singapore 388669, in District 14. The modern medium rise apartment is completed in 2000 and close to Kallang MRT Station and Geylang Bahru MRT. Residents can get their daily necessities at the nearby Upper Boon Keng Market and Food Centre. Alternatively, they may head to the Kallang Leisure Park and the aforementioned Mustafa Centre for a host of amenities. Recreational facilities, such as the Kallang Water Sports Centre, are also just around the corner. Carine Lodge is located within this district which made it a desirable place to live in. The surroundings of Carine Lodge are filled with immense spaces of greenery that offers the residents with open parks, recreational hubs and nature reserves. The Apartment has facilities such as BBQ pits, gym, jacuzzi and swimming pool. The apartment is close to Upper Boon Keng Market and Food Centre and Sims Place Market and Food Centre. It is well connected and well linked with expressways and highways. Carine Lodge is an elite sphere of peaceful living in the heart of the city where the comfy quietude of nature beckons at doorstep, put side by side serenely contrast of the pleasure of city living.

Carine Lodge - Accessibility

As the Carine Lodge is located at District 14 which is the most prosperous and full of constructional developments, there are plenty of accessibilities available with this apartment. It is accessible through Kallang MRT Station which is closest to this property. There are other MRT such as Geylang Bahru MRT (DT24) and Aljunied (EW9). Bus services and other public transport are easily available near this apartment. This apartment is accessible via East Coast Parkway, North Bridge Road, and Lorong 1 Geylang.

Housemates

- Room 1
- Vacant
- Vacant
- Room 2
- Room 2
- Male - W
- IT



- This Room
- Vacant
- Vacant
- Meat Room
- Male/Female - JIM
- Banker/Accountant



- Balcony Room
- Male - I
- IT Consultant



Building Amenities

- Barbeque Area
- Sauna
- Garden
- Jacuzzi
- Supermarkets within 200m
- Jacuzzi
- Fitness Room
- Basement Carpark
- Tennis Court
- Swimming Pool
- Sky Deck

Unit Features

- Air Conditioning
- Dryer
- Cleaning (Common Areas)
- Microwave
- High Speed WiFi
- Light Cooking
- Oven
- Fridge
- Water Heater
- Washing Machine

Unit Features

Looking for a nice and cozy place to settle then check out Carine Lodge which is lovely as well as affordable. It is a freshhold apartment located at 75 Lorong 3 Geylang, Singapore 388669, in District 14. The modern medium rise apartment is completed in 2000 and close to Kallang MRT Station and Geylang Bahru MRT. Residents can get their daily necessities at the nearby Upper Boon Keng Market and Food Centre. Alternatively, they may head to the Kallang Leisure Park and the aforementioned Mustafa Centre for a host of amenities. Recreational facilities, such as the Kallang Water Sports Centre, are also just around the corner. Carine Lodge is located within this district which made it a desirable place to live in. The surroundings of Carine Lodge are filled with immense spaces of greenery that offers the residents with open parks, recreational hubs and nature reserves. The Apartment has facilities such as BBQ pits, gym, jacuzzi and swimming pool. The apartment is close to Upper Boon Keng Market and Food Centre and Sims Place Market and Food Centre. It is well connected and well linked with expressways and highways. Carine Lodge is an elite sphere of peaceful living in the heart of the city where the comfy quietude of nature beckons at doorstep, put side by side serenely contrast of the pleasure of city living.

Bed

1

Bath

Shared

Area Prefix Text

000

Area

100